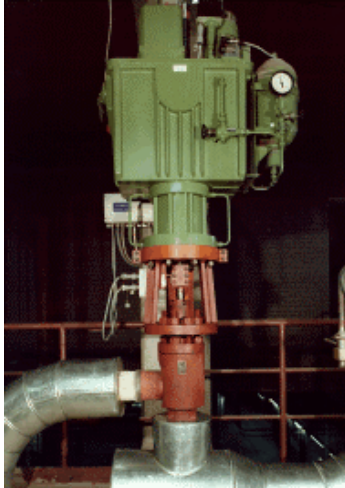


20 Years of Trouble-Free Operation of GESTRA Control Valves ZK with Radial Stage Nozzle



Leak-off valves for feed pumps in power plants and industrial installations.

In 1978/79 the valves were installed in the harbour power station of the Municipal Service Authorities in Bremen. The operating conditions were as follows:

Δp max	362 bar
Sound level below	80 dBA
Flowrate	126 t/h.

Since then the installation has been working successfully without replacement of the heavy-duty internals, thanks to the following features of our control valves:

- High wear resistance
- Tight shut-off
- Low sound level

We have equipped more than 200 power stations worldwide with our leak-off valves type ZK. The last installation took place in the East German Power Plants Schwarzepumpe and Boxberg (3*900Mwe), featuring the following operation conditions:

Δp max	535 bar
Design data	550 bar
Flowrate	579 t/h.

GESTRA - The Steam Experts

Interested? Please contact Mr Franz Rysavy, GESTRA GmbH, Marketing,
Tel.+49 421 3503-428 <mailto:frysavy@gestra.de>

GESTRA is a global leader in the design and production of valves and control systems for heat and process fluid control. Being a member of the Invensys group, we are capable of offering our customers complete and intelligent solutions engineered to function with maximum reliability.

Our products and services have many practical applications and are employed where

- steam is generated, distributed or used
- fluids flow
- energy saving is possible
- environmental protection and safety-oriented control systems are needed..

Visit us at <http://www.gestra.de> or

click to connect: gestra.today@gestra.de when you

- want to subscribe to the e-mail distribution list
- know someone who wants to subscribe to the e-mail distribution list
- want to unsubscribe from the distribution list
- want to submit an article
- have any questions

Please state whether you want an English or German version.